

240 — ROSIE THE RIVETER

Rosie the Riveter was the fictional character pictured in posters to recruit women into the work force during World War II in the 1940s. Women started working in large numbers building airplanes, tanks, warships, artillery, and ammunition. Factory work demanded slacks or overalls, and "utility clothes" became the uniform of Rosie and her colleagues. Folkwear pays tribute to the accomplishments of these heroic women with this hard-working wardrobe of Shirt, Overalls, and Slacks to sew. Also included are patterns for a Sweater to knit and a snood to crochet.

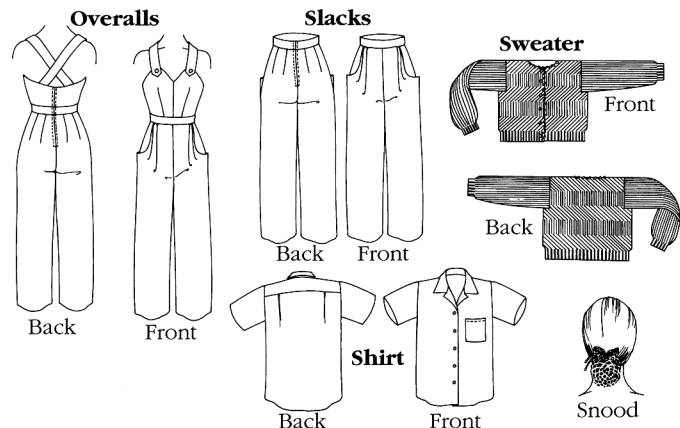
The **Shirt** is styled from men's sport shirts and is known today as a "camp" shirt. It's timeless in crisp white cotton and lots of fun made extra-large in bright tropical prints.

The pleated **Slacks** have side pockets and a back zipper. Straight legs fall smoothly from the hips for a clean, smooth look. Add the sweetheart-shaped bodice for **Overalls** with straps that cross in the back.

The charming **Sweater** knit in two colors in alternating garter and stockinette stitches has set-in sleeves and a round neck; and to keep your hair out of the machinery, a simple **Snood** to crochet completes the package.

Included in the pattern is "The Life and Times of Rosie the Riveter," a fascinating account of women's valuable contributions to the war effort.

FRONT AND BACK VIEWS



SUGGESTED FABRICS & YARNS

Shirt: Light to medium-weight cotton and blends; rayon and silks.

Slacks and Overalls: Medium-weight cotton, wool, blends, corduroy, denim, velvet, and velveteen.

Sweater & Snood: *Classic Elite Boston*, 100% wool (110 yds [91.8m] per ¾ oz. [50g] ball) or equivalent.

NOTIONS

Shirt: Thread; five ½" (13mm) buttons; 1 yd (.95m) of 22" (56cm) wide light to medium-weight interfacing.

Pants: Thread; 7" (18cm) zipper; one ¾" (2cm) button; 1 yd (.95m) of 22" (56cm) wide light to medium-weight interfacing.

Overalls: Thread; 14" (35.5cm) zipper; two ¾" (2cm) buttons.

Sweater: Six 1" (2.5cm) buttons; 2 yds (1.83m) of 1¾" (4.5cm) grosgrain ribbon; size 6 & 8 knitting needles.

Snood: Size H Crochet hook.

SIZING AND YARDAGE REQUIREMENTS

MISSES' SIZES

	6	8	10	12	14	16	18	20	
Bust	30½ 78	31½ 80	32½ 83	34 87	36 91	38 97	40 102	42 107	in. cm
Waist	23 58	24 61	25 64	26½ 67	28 71	30 76	32 82	34 87	in. cm
Hip	32½ 83	33½ 86	34½ 88	36 91	38 97	40 102	42 107	44 112	in. cm
Bk Waist	15½	15¾	16	16¼	16½	16¾	17	17¼	in.
Length	39.5	40	40.5	41.5	42	42.5	43	43.5	cm

SHIRT	6	8	10	12	14	16	18	20	
45" (115cm) fabric with or w/o nap*			2¾ 2.2		2½ 2.3		2¾ 2.4		yds m
60" (150cm) fabric with or w/o nap*	1¾ 1.6				1⅞ 1.75		2 1.83		yds m

SLACKS	6	8	10	12	14	16	18	20	
45" (115cm) fabric with or w/o nap*			2½ 2.3		3 2.75				yds m
60" (150cm) fabric with or w/o nap*	1⅞† 1.5	1¾† 1.6	1⅞† 1.75		2⅞* 1.95	2¼* 2.1	2⅝* 2.2	2½* 2.3	yds m

OVERALLS	6	8	10	12	14	16	18	20	
45" (115cm) fabric with or w/o nap*			3⅞* 2.9		3¼* 3		3⅞† 3.35		yds m
60" (150cm) fabric with or w/o nap*	2⅞† 1.95	2¼† 2.1		2½* 2.3		2⅝* 2.4		yds m	

*For each 1" (2.5cm) you wish to lengthen or shorten, add or subtract 2" (5cm) to yardages given.

†For each 1" (2.5cm) you wish to lengthen or shorten, add or subtract 1" (2.5cm) to yardages given.

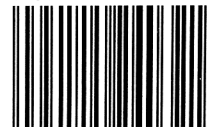
SHIRT	6	8	10	12	14	16	18	20	
Finished bk length from nape of neck	28¼ 71.5	28½ 72.5	28¾ 73	29 73.5	29¼ 74.5	29½ 75	29¾ 75.5	30 76	in. cm
Finished width at hem	43½ 110.5	44½ 113	45½ 115.5	47 119.5	48½ 123	50½ 128.5	52½ 133.5	55½ 141	in. cm

OVERALLS/SLACKS	6	8	10	12	14	16	18	20	
Finished side length	39¼ 99.5	39½ 100.5	40 101.5	40¼ 102	40¾ 103.5	41¼ 105	41¾ 106	42½ 108	in. cm
Finished width at lower edge (ea. leg)	19⅞ 50.7	20⅞ 52.5	21⅞ 54.5	22⅞ 57	23¼ 59.1	24¾ 63	25⅞ 65.7	27 68.5	in. cm

SWEATER	6	8	10	12	14	16	18	20	
Color #1 one ¾ oz. (50g) ball (100 yds [91.8m] per skein)	8	9		9		10		SIZE 6 & 8 KNITTING NEEDLES	
Color #2 one ¾ oz. (50g) ball (100 yds [91.8m] per skein)	2	3		3		4			
Finished back length from nape of neck	19 48.5	19½ 49.5		20 51		20½ 52		in. cm	

SNOOD	ONE SIZE	
one ¾ oz. (50g) ball (100 yds [91.8m] per skein)	1	SIZE H CROCHET HOOK

FOLKWEAR 240



0 94115 24032 1

Printed in U.S.A.