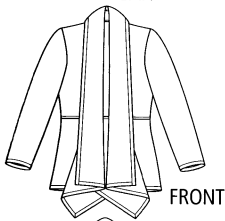


CARDIGAN



FRONT



BACK

TANK



FRONT



BACK

# ANN'S CARDIGAN & TANK

**CARDIGAN** Open cardigan with cascading panels and fold-back front band, front and back waist seams, long sleeves and stitched hems.

*Wrong side of fabric will show.*

**TANK** Scoop-neck tank with shaped waist, winged side vents, unfinished neck, armhole and hem edges.

## FABRIC SUGGESTIONS

**CARDIGAN** Med. wt. knit such as jersey, double knit, ponte, French terry, sweater knit. Novelty knits.

*Wrong side of fabric will show.*

**TANK** Lt. to med. wt. knit.

## NOTIONS

**CARDIGAN** Thread

**TANK** Thread

## FABRIC REQUIREMENTS

<b>CARDIGAN</b>	Size	Yardage	<b>TANK</b>	Size	Yardage
45"	XS-M	2 <sup>5</sup> / <sub>8</sub>	45"	All Sizes	1 <sup>5</sup> / <sub>8</sub>
	L-XXL	3 <sup>1</sup> / <sub>3</sub>			
	60"	XS-L		2 <sup>1</sup> / <sub>4</sub>	60"
	XL-XXL	2 <sup>5</sup> / <sub>8</sub>	L-XXL	1 <sup>5</sup> / <sub>8</sub>	

## SIZE MEASUREMENTS

	XS	SM	MED	LG	XL	XXL
SIZE	6	8 10	12 14	16 18	20	22
Bust	31	32 <sup>1</sup> / <sub>2</sub> 34	36 38	40 42	44	46
Waist	24 <sup>1</sup> / <sub>2</sub>	25 <sup>1</sup> / <sub>2</sub> 26 <sup>1</sup> / <sub>2</sub>	27 <sup>1</sup> / <sub>2</sub> 29	31 33	35	37
Hip	34	35 36	37 39 <sup>1</sup> / <sub>2</sub>	41 <sup>1</sup> / <sub>2</sub> 43 <sup>1</sup> / <sub>2</sub>	45 <sup>1</sup> / <sub>2</sub>	47 <sup>1</sup> / <sub>2</sub>

### LENGTH

	XS	SM	MED	LG	XL	XXL
Cardigan	26 <sup>3</sup> / <sub>4</sub>	27	27 <sup>1</sup> / <sub>4</sub>	27 <sup>1</sup> / <sub>2</sub>	28	28 <sup>1</sup> / <sub>2</sub>
<i>Back Length (neck to hem)</i>						
Tank	21	21 <sup>1</sup> / <sub>8</sub>	21 <sup>1</sup> / <sub>4</sub>	21 <sup>1</sup> / <sub>2</sub>	21 <sup>3</sup> / <sub>4</sub>	22
<i>Back Length (neck of garment to hem)</i>						