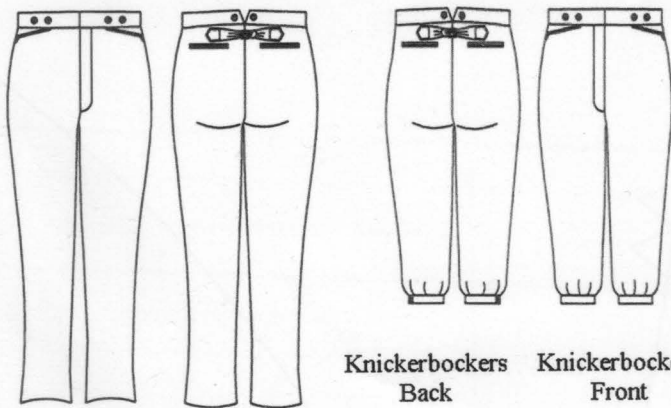


Men's Mid Victorian to Edwardian Period Trousers 1850-1910 with Knickerbockers Option

Fits Waist Sizes 28—60"

Three Fits—Slim, Mature, and Portly



Trousers Front Trousers Back

MEN'S MID VICTORIAN TO EDWARDIAN TROUSERS

1850-1910 Civilian trousers, appropriate for work, casual, or formal wear. The front has vertical side pockets, a button fly, and suspender buttons. The back can have two welt pockets or none, a back strap cinch belt, and a split back waistband with suspender buttons. The hems at the bottom of the legs are shorter at the center front than the center back and have a very slight flare. **FIBER:** Cotton, Linen, or Wool. **FABRIC:** Any medium bottom weight fabric, twill, duck, jean. Wool, including plain weave, gabardine, serge, tropical, kersey, cassimere, flannel, twill. **FABRIC PATTERNS:** Plain, striped, herringbone, checked, plaid, novelty. **POCKETS:** Pocketing, selesia, or light twill. **LINING:** Striped cotton. **FACINGS:** Dark matching color cotton. **INTERFACING:** Modern fusible or linen for period. **NOTIONS:** Eleven 3/4" or 5/8" buttons for the suspenders and fly, two 5/8" waistband buttons, one 1" or 3/4" back belt buckle.

YARDAGE REQUIREMENTS-Trousers

Additional yardage required for taller than inseam of 34" and matching plaids.

Trousers -Men's Slim and Mature Fits

	45"	54"	60"
Sizes 1-3	2 3/4	2 1/2	2
Sizes 4-6	2 3/4	2 3/4	2
Sizes 7-9	3 1/8	3 1/8	3
Sizes 10-12	3 1/8	3 1/8	3 1/8

Trousers -Men's Portly Fit

	45"	54"	60"
Sizes 1-3	2 3/4	2 1/2	1 7/8
Sizes 4-6	2 7/8	2 7/8	2 1/8
Sizes 7-9	3 1/8	3 1/8	2 7/8
Sizes 10-12	3 1/4	3 1/4	3 1/4

*See bottom of next column for additional yardage.

There are three different fits in this pattern. The fit you choose depends on the relationship between waist and hip.

Body Measurements:

Men's Slim Fit-Waist 5-7 inches smaller than hip

Size	1	2	3	4	5	6
Waist	28	30	32	34	36	38
Hip	35	37	39	41	43	45
Size	7	8	9	10	11	12
Waist	40	42	44	46	48	50
Hip	47	49	51	53	55	57

Men's Mature Fit-Waist same measurement as Hip

Size	1	2	3	4	5	6
Waist	35	37	39	41	43	45
Hip	35	37	39	41	43	45
Size	7	8	9	10	11	12
Waist	47	49	51	53	55	57
Hip	47	49	51	53	55	57

Men's Portly Fit-Waist 3 inches bigger than Hip

Size	1	2	3	4	5	6
Waist	38	40	42	44	46	48
Hip	35	37	39	41	43	45
Size	7	8	9	10	11	12
Waist	50	52	54	56	58	60
Hip	47	49	51	53	55	57

YARDAGE REQUIREMENTS-

Knickerbockers

Additional yardage required for longer than inseam of 20" and matching plaids.

Knickerbockers -Men's Slim Fit

	45"	54"	60"
Sizes 1-3	2 1/4	1 7/8	1 5/8
Sizes 4-6	2 1/4	2 1/4	1 3/4
Sizes 7-9	2 1/2	2 1/2	2 1/8
Sizes 10-12	2 3/4	2 3/4	2 3/4

Knickerbockers -Men's Mature Fit

	45"	54"	60"
Sizes 1-3	2 1/4	1 7/8	1 5/8
Sizes 4-6	2 3/4	2 1/4	1 7/8
Sizes 7-9	2 3/4	2 1/2	2 1/8
Sizes 10-12	2 3/4	2 3/4	2 3/4

Knickerbockers -Men's Portly Fit

	45"	54"	60"
Sizes 1-3	2 1/4	2 1/8	1 3/4
Sizes 4-6	2 3/8	2 1/8	1 7/8
Sizes 7-9	2 1/2	2 1/2	2 1/8
Sizes 10-12	2 7/8	2 7/8	2 7/8

*Also, both Trousers and Knickerbockers, all fits, all sizes

Lining, Striped cotton 7/8

Pocketing, light twill 1/2

Facing-Dark matching cotton 1/8

Light Interfacing, Fusible or plain 1/2

Heavy Interfacing, Fusible or plain 1/2

Copyright 2013, Laughing Moon Mercantile

All Rights Reserved