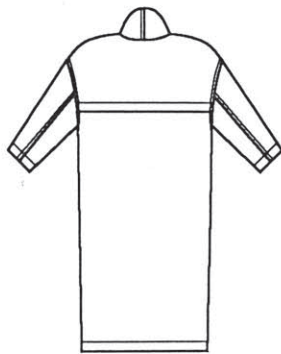




Front



Back

San Francisco Coat: Very loose-fitting, unlined coat, above ankle, has draped and tucked collar, single welt pockets, back shield, 3-button closing, long sleeves, stitched hems.

Fabric Suggestions: Microfiber, Rainwear, Silk Dupioni, Gabardine, Heavy Linen, Silk Noil, Silk Taffeta, Velvet.

Notions: 1/3 yd Interfacing, Three 1" Buttons, Thread.

Fabric Requirements:

45" : 6 yards all sizes

60" : 5 1/2 yards all sizes

SIZE MEASUREMENTS

SIZE	(SMALL)		(MEDIUM / LARGE)			
	8	10	12	14	16	18
Bust	32 1/2	34	36	38	40	42
Waist	25 1/2	26 1/2	27 1/2	29	31	33
Hip	35	36	37	39 1/2	41 1/2	43 1/2

WIDTHS Lower edge

Top 66 1/2 73 1/2

LENGTH Finished back from base of neck

Top 46 1/2 49 1/2