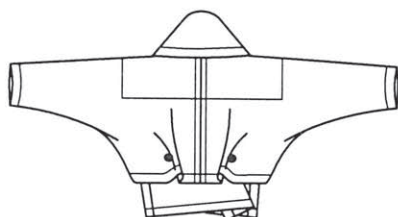


Front



Back

Equinox Jacket: Very loose-fitting, unlined, hip length (waist length in back) wrap jacket. Body, sleeves and collar are cut-in-one with contrasting hem, buttonhole facing and inside back yoke. Hidden button tab forms soft back pleats. **No Provisions for Above or Below Waist Adjustments.**

Fabric Suggestions: Jacket: Med. wt. Coating, Wool Flannel, Melton, Cashmere, Fleece, Novelty Woolens, Denim, Chenille, Double Knit. Wrong side of fabric shows. Contrast: Lt. wt. Crisp Wovens.

Notions: Four 1" Buttons, Three 1/2" Buttons. Thread.

Fabric Requirements:

Jacket	Contrast
50"/60": 2 1/4 yards all sizes	45"/60": 1 1/8 yards all sizes

SIZE MEASUREMENTS

	(SMALL)		(MEDIUM)			(LARGE)		
SIZE	8	10	12	14	16	18	20	22
Bust	32 1/2	34	36	38	40	42	44	46
Waist	25 1/2	26 1/2	27 1/2	29	31	33	35	37
Hip	35	36	37	39 1/2	41 1/2	43 1/2	45 1/2	47 1/2

LENGTHS Finished back from base of neck

Jacket	20"	20 1/2"	21"
--------	-----	---------	-----